

Annual Performance Report

2020/2021





Bellyful New Zealand

Legal Name of Entity

Bellyful New Zealand Trust

Entity Type and Legal Basis

Bellyful New Zealand Trust is a Charitable Trust incorporated under the Charities Trust Act 1957.

Registration Number

CC46995

Postal Address

PO Box 745, Wellington 6140

Contact

Phone: 0508 BELLYFUL (0508 235 5938)

Email: contact@bellyful.org.nz

 BellyfulNZ

 @bellyfulnz

 Bellyful New Zealand

www.bellyful.org.nz

Contents

Bellyful New Zealand Legal and Contact Information.....	2
Bellyful New Zealand Report from the Board and General Manager	4
Meet our Board and General Manager.....	5
About Bellyful	6
Bellyful Strategic Plan	7
Bellyful Structure	8
How Bellyful Works.....	11
Statement of Service Performance.....	15
2020 Recipient Survey.....	16
Bellyful Recipient Stories.....	17
Volunteer Appreciation and Recognition	19
Thanking our Donors, Sponsors and Supporters	21
Approval of the Performance Report.....	25
Statement of Financial Performance	26
Statement of Financial Position	27
Statement of Cash Flows	28
Statement of Accounting Policies	29
Notes to the Performance Report.....	30
Auditor's Report.....	38

BELLYFUL NEW ZEALAND REPORT FROM THE BOARD AND GENERAL MANAGER

Tēnā koutou katoa

We are pleased to present the 2020/2021 Performance Report for the Bellyful New Zealand Trust (Bellyful NZ).

We are proud of the impact our team has had this year despite the unique and ongoing challenges the pandemic has presented. The results in this report reflect the restrictions in place due to COVID-19 and the challenges of operating through a pandemic.

This has been a year like no other for Bellyful NZ. We adapted the way we worked as alert level-guidelines changed. Our Bellyful NZ team worked fluidly together to ensure that our volunteers, our recipients and the team of staff who manage our nationwide operations were safe.

We acknowledge the diligent and committed leadership of Charlotte Delahunty, who stepped down from her role at the end of September 2020. Charlotte was Bellyful NZ's first paid part-time Chief Executive and nurtured the Bellyful 'baby' through its toddler and 'growth spurt' years, then through the challenges of a measles outbreak and COVID-19. Her calm leadership as the pandemic hit our shores is most notable.

Bellyful NZ's alert level adaptation was swift, considered and supported with clear communication from the operations team. The Bellyful NZ approach, designed to directly match the official government alert levels, was a great example of both leading our Bellyful NZ team and setting an example across the sector.

ALERT LEVEL	4	No Deliveries (other than in exceptional circumstances, via partner organisations).
ALERT LEVEL	3	No contact Deliveries,* prioritising highest need. Safe, no contact fundraisers. No meetings.
ALERT LEVEL	2	No contact Deliveries.* Cookathons following strict hygiene standards. Safe, no contact fundraisers.
ALERT LEVEL	1	Deliveries, Cookathons and fundraisers – following clear distancing guidelines.

* Deliveries at levels 2 and 3 are dependant on meals and volunteers being available.

We all worked together, doing our part of the team of five million to keep ourselves and the communities we serve safe while also striving to deliver our Mission, to nourish and connect communities, within the confines of health and wellbeing guidelines in place across the motu.

For Governance volunteers it was a year like no other with challenges supporting the health and wellbeing of a large volunteer workforce. Big issues included cancelling face-to-

face events, and guiding an organisation through continuing alert level changes and challenges, as well as recruiting for a new organisational leader.

We farewelled Rebecca Morahan, who had been a Trustee since October 2016. Over the last four years she has been a rock within the Governance leadership team. She stayed a bit longer than she intended (don't we all) and provided vital support and strength during the last year when COVID-19 made being a Governance volunteer exceptionally challenging. She also stayed on while we selected our new General Manager. We are immensely grateful for this contribution, and we couldn't have done it without her.

Rebecca has given so much to Bellyful NZ over many years, in a range of roles. She was with the Bellyful Porirua branch right from the beginning. Rebecca held the role of Branch Coordinator for over 5 years, from April 2011 (when the branch first started) until December 2016 when she became a Trustee. She never really left the branch though, and continues to deliver and help at Cookathons.

Thank you to the national support team of staff and volunteers for your exceptional work during COVID-19 and beyond, and your team commitment as we recruited for and transitioned to new leadership. Thank you to General Manager Wendy Thompson, for rising to the challenge of leading Bellyful NZ. She has transitioned to this new leadership role with flourish.

We make a special acknowledgement of the team involved in our further success in the Charity Reporting Awards. Aruna Hill, Leigh Cooke, Ange Vink, Jacqui Stanford and Charlotte Delahunty secured a highly commended award for our last report.

We also welcome new team member Amanda Frei who joined us in January 2021 as Bellyful Administrator.

We were delighted to be able to hold two Regional Meetings for some of our branch leaders in February and March. Coming together in person to discuss our plans for the future was incredibly valuable after months of Zoom meetings, phone calls and emails. We were rejuvenated.

Thank you to all our volunteers for your ongoing commitment to making a difference within and for your communities. Thank you for your commitment to our Vision, Mission and Values. Thank you for keeping our community safe and continuing to deliver when and where you could. Your contribution to Bellyful is at the very heart of the impact we make. Thank you for being the ambassadors of Bellyful around Aotearoa.

And thank you to our key supporters that have continued to back us. We particularly acknowledge One Percent Collective and our other bedrock funders for their ongoing support during a challenging year.

Ngā Mihi

Trustees - Michelle Kitney, Carolyn Stiles, Karalyn Van Deursen, Rachel Pearce, Sharyn Richardson, Rebecca Morahan (resigned Dec 2020), Sally Ma (resigned May 2021).

General Manager - Wendy Thompson.

MEET OUR BOARD AND GENERAL MANAGER



Michelle Kitney
Board Chair / Trustee

Michelle Kitney is the Kaihautū Chief Executive of Volunteering New Zealand, where she has been part of the senior leadership team since 2018. Michelle is

passionate about working collaboratively and with impact in the for-purpose sector. She has a range of experience including regulatory and compliance, marketing-communications and social marketing, engagement, and research. She has also volunteered extensively in community organisations that provide services and support to whānau and children. As a mum of twins, Michelle knows how valuable the support of Bellyful can be to whānau in the early days of parenthood.



Carolyn Stiles
Treasurer / Trustee

Carolyn is super excited to be on the Board of such an amazing, caring organisation. Having had bit of a rough start to motherhood herself, with her son unexpectedly

arriving 10 weeks premature, when she had only lived in NZ for 10 weeks and didn't have a support network around her, she understands all too well the value of the Bellyful service. Carolyn brings significant management and governance experience having held senior roles in the UK corporate world and more recently worked for leading New Zealand organisations.



Karalyn Van Deursen
Trustee

Karalyn has more than 25 years' experience working in advertising, marketing and communications. She is currently Executive Director Communications - Canterbury DHB and

West Coast. She has considerable experience in crisis communications, branding, external and internal communications, stakeholder engagement and working with media.



Rachel Pearce - *Trustee*

Rachel is passionate about babies and children having the best possible start in life. For most of her career, Rachel has worked in women's and children's health in a range of governance, policy and project roles in Australia, the UK and Aotearoa. Currently, Rachel manages the families and wellbeing portfolio within the strategic funding team at Capital and Coast and Hutt Valley District Health Boards.



Sharyn Richardson - *Trustee*

With 20 years of project management, team development, recruitment and strategic planning behind her, Sharyn is passionate about building teams and ensuring that everyone feels supported to do the absolute best job that they can do. She is currently the Asia Pacific General Manager of Professional Services for a leading emergency management software provider. Sharyn has seen

what a difference Bellyful makes to so many whānau at critical times in their lives and feels very privileged to be part of the team.



Rebecca Morahan - *Trustee*
(resigned Dec 2020)

Rebecca was one of the founding Branch Coordinators of the Bellyful Porirua branch in 2011, and led the branch until December 2016, before becoming a Trustee. In 2016, she co-founded WELLfed, which provides free cooking classes for parents in decile 1 schools in Porirua East. In both organisations Rebecca is an inspirational leader who energises those around her.



Sally Ma - *Trustee*
(resigned May 2021)

Sally Ma has held regulatory and policy roles in the public and private sector and also has a strong background in public policy issues. Having a young child, she understands the importance of supporting whānau in the early days and how organisations like Bellyful can provide vital support during vulnerable times and help provide a sense of community.



Wendy Thompson - *General Manager*

Wendy has previously been the Bellyful Christchurch Branch Co-ordinator and Bellyful NZ's Volunteer and Operations Manager and has been with Bellyful since the Christchurch branch's first meeting in April 2012. Wendy lives in Christchurch with her husband, and has three grown-up children. Wendy trained as a pharmacist in New Zealand and worked both here and in

England in a variety of hospital and retail positions. In her spare time, Wendy enjoys ice skating, mountain biking, running, skiing, boating and overseas adventures with her husband.

About Bellyful

WHY DO WE EXIST?

The Bellyful Story

Bellyful was born in 2009 when Jacqui Ritchie had people arrive on her Pukekohe doorstep with home-cooked food after the birth of her second child.

The meals and baking made a huge difference during that exhausting time, making her feel supported and empowered, rather than lonely and isolated, as she had felt when her first child arrived.

This inspired a dream - women coming together to cook meals and distribute them to mums who had new babies and lacked support. It was a vision Jacqui shared with friends and led to the launch of the very first branch, Bellyful Franklin, in May 2009.

This dream of tired parents being supported by their communities caught on. Since 2009 Bellyful has grown to help 24 communities around Aotearoa.

By March 2021, we had delivered 163,993 meals to more than 30,000 whānau in communities across Aotearoa, thanks to a network of hundreds of incredible volunteers.

Implementing Our Vision and Mission

In 2019 Bellyful set about consulting with our volunteers, recipients and referrers about our vision, mission, and what impact our service had on whānau. This was to ensure our strategy for the next three years was relevant and impactful.

The new vision and mission, values, and strategy, build on our previous strategic pillars, while weaving in community connection, sustainability and impact.

The intention to introduce the new mission at our May 2020 Training Weekend in Christchurch was thwarted by COVID-19 and the subsequent cancellation of the weekend. Once the main lockdowns were over, we re-grouped and began to roll the mission out across the organisation, initially using Zoom meetings to introduce and discuss with our branch leaders.

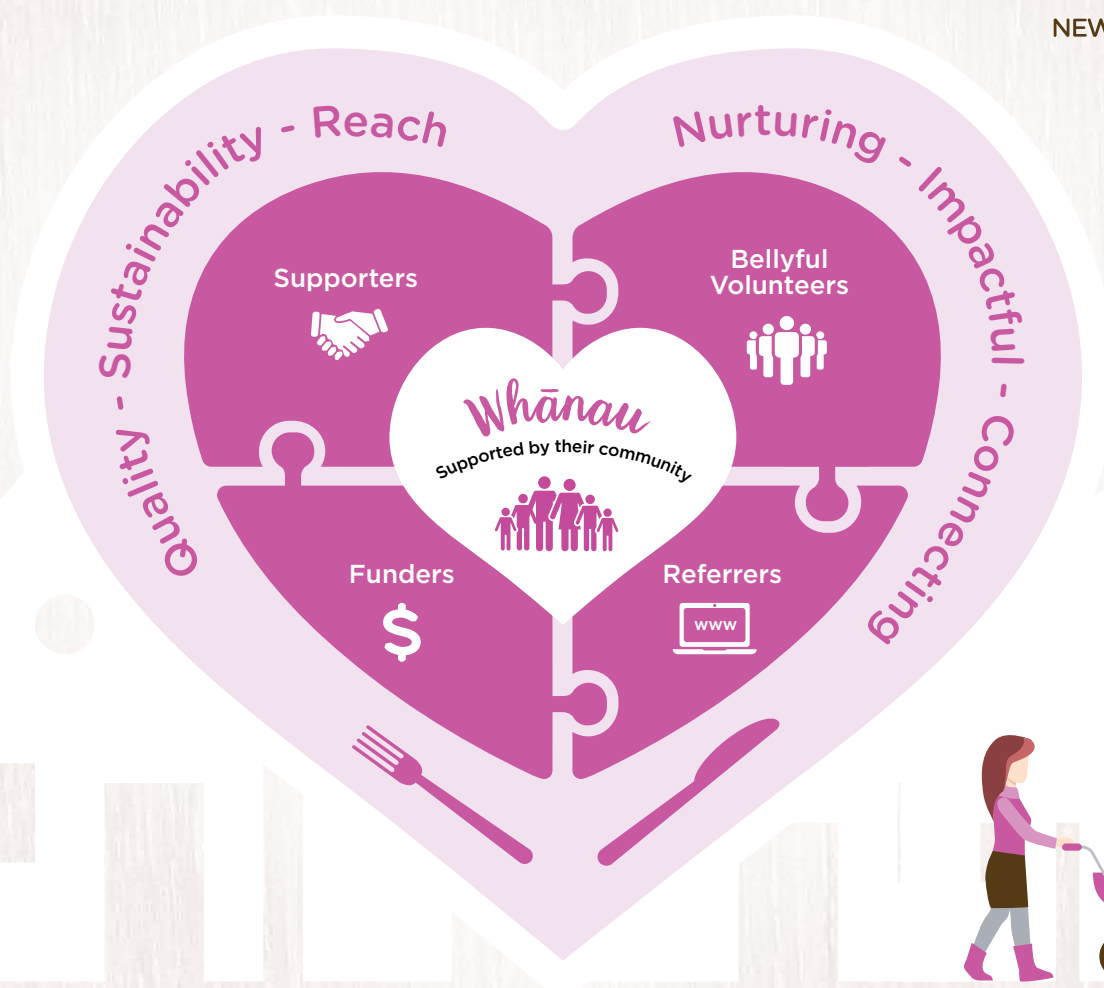
Over the year all our brochures and other resources have been updated to include the new mission.

During February and March 2021, we held Regional Meetings in Christchurch and Auckland where the practical implementation of the new mission was discussed in depth with our branch leaders.



Strategic Plan

2020-2023



Our Vision

All whānau with babies or young children feel supported by their communities.

Our Mission

Bellyful nourishes and connects communities by cooking and delivering meals to whānau, with babies or young children, who need support.

BELLYFUL'S VALUES

Our values are nurturing, connecting and impactful. These values guide us when recruiting for our teams and when faced with decisions. We always want to ensure we stay true to our values.

BELLYFUL'S STRATEGY

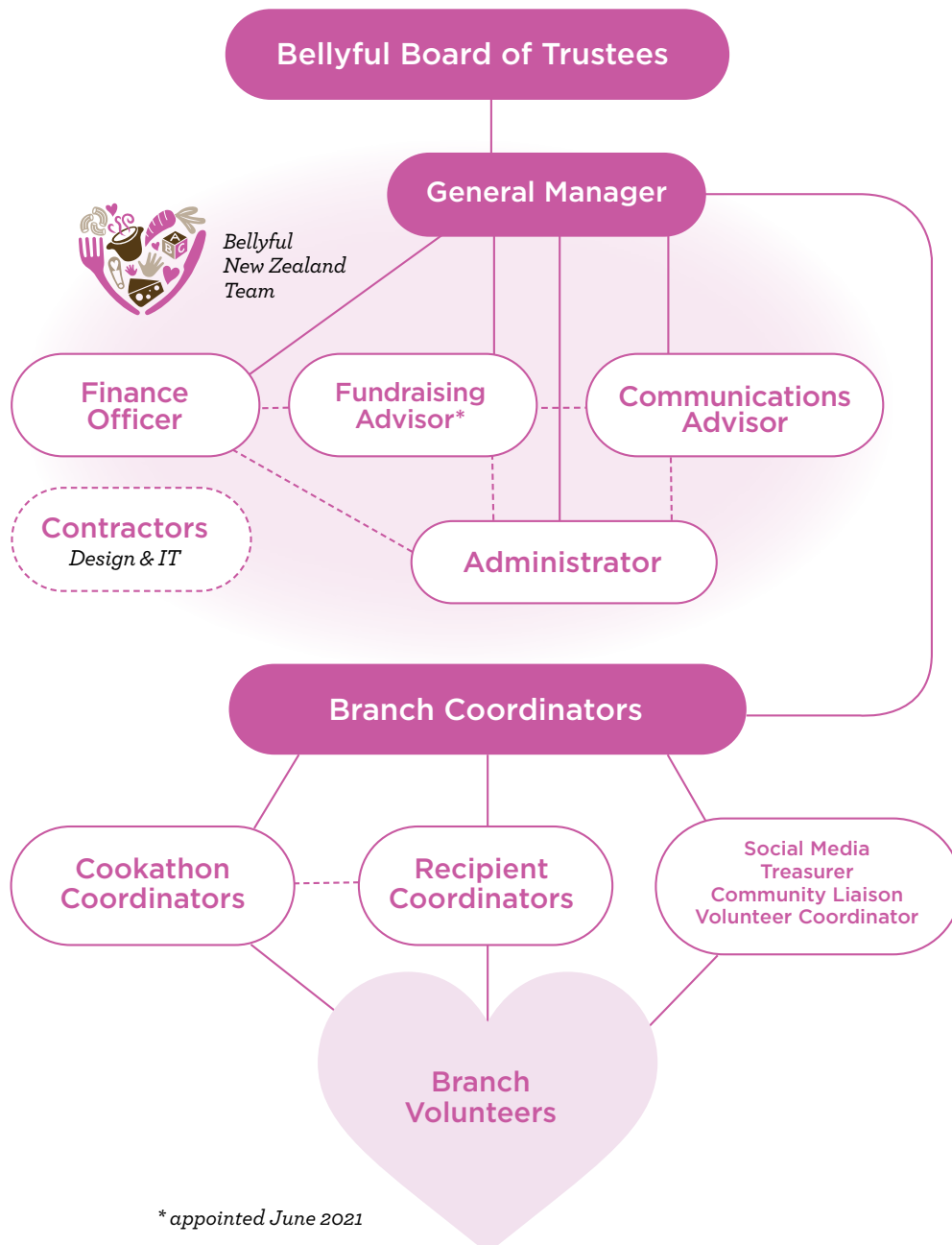
Our strategy reflects that whānau and their community are at the heart of all we do, and how our volunteers, referrers, supporters and funders are vital in ensuring they are supported, wrapped around by Bellyful's values of being nurturing, impactful and connecting, as well as our strategic goals of sustainability, quality and reach.

Our strategic priority of sustainability includes financial sustainability, environment targets and a sustainable business model. Quality includes trusted, known and safe. Reach includes accessible and impactful.

Bellyful Structure

Bellyful NZ is governed by a volunteer Board of Trustees who meet eight to ten times per year. In 2020/21 we had just one change to the Board. The members of the governing body, as at 31 March 2021 are:

- **Michelle Kitney** (Trustee – Chair from May 2020)
- **Carolyn Stiles** (Treasurer)
- **Karalyn van Deursen** (Trustee)
- **Rachel Pearce** (Trustee)
- **Sharyn Richardson** (Trustee)
- **Rebecca Morahan** (Trustee, resigned 31 December 2020)
- **Sally Ma** (appointed Trustee February 2020 – Deputy Chair from May 2020, resigned May 2021)



Shared Services

Bellyful's day to day operations are undertaken by a wonderful group of volunteers and a few paid staff and contractors. Bellyful NZ was led by a paid part-time, Chief Executive (CE) Charlotte Delahunty, until 30 September 2020.

Volunteer and Operations Manager, Wendy Thompson, now leads Bellyful NZ in the new paid part-time role of General Manager (GM), created after Charlotte's departure.

The GM is supported by our paid part-time Finance Officer, Aruna Hill (from January 2020), our paid part-time Communications Advisor, Jacqui Stanford (from December 2019) and our paid part-time Administrator, Amanda Frei (from January 2021). Volunteers assist with newsletters, social media, story writing and grant applications. Together this forms the Bellyful NZ Team which supports the shared services provided to the Bellyful branches.

Bellyful NZ also contracts specialist services, and we would like to extend our thanks to two in particular who have supported us for many years:

- Angela Vink of Doppel Ltd. Ange is responsible for all of Bellyful's beautiful branding and design
- Sean O'Connor of O'Connor Ltd. who very patiently provides our IT support - www.seanoconnor.co.nz

In addition, Sally Warrender, Branch Coordinator of Bellyful Franklin, has provided contract support assisting with grant applications and accountability for five hours per week since October 2020.

Branches

As of 31 March 2021, there were 24 Bellyful branches - six in the Auckland region, six in the central North Island, five in the Wellington region and seven in the South Island.

Each branch is led by a volunteer Branch Coordinator or two Co-Branch Coordinators and supported by other volunteers including (depending on branch size):

- Recipient Coordinator
- Cookathon Coordinator
- Fundraising Coordinator
- Branch Treasurer
- Social Media Coordinator
- The larger branches also include a 2IC (second in charge) who supports other members of the branch leadership team.

Our Branch and Co-Branch Coordinators in the year to 31 March 2021 were:

Hibiscus Coast

Kelly Paddison until October 2020 then Caryn Harris

North Shore

Nicola Cronin until October 2020 then Fiona Wilson

West Auckland

Tracy Cox

Central Auckland

Elle Watrin

East Auckland

Ani Stace until July 2020 then Betty Oudney

Franklin

Leanne McMurtrie/Sally Warrender

North Waikato

Victoria Kemp

Hamilton

Julia Carroll

Whitianga

Emily Pavey/Franziska Jack

Tauranga

Amy Kemeys/Maria Page until August 20 then Rose Ross

Taupō

Katt Flett until June 20 then Sharon Wilcox

Napier

Sharne Ramsay

Porirua

Nicole Barlow

Hutt Valley

Tinne Geens until February 21 then Kirsty Johnson

Karori

Jacqui Wight-Jago

Wellington North

Mel Bradley/Sarah Urquhart

Wellington South

Andrea Curzon-Hobson until February 21 then Jane Stringer

Nelson

Sarah Kerby until June 20 then Anita Watson

Waimakariri

Carol Burdon

Christchurch

Kimberly McCall until February 21 then Sandy Galland

Selwyn

Jeraldine Teng

Geraldine

Rachel Snow

Dunedin

Chloe Hawken

Invercargill

Michelle Grant

24

BELLYFUL BRANCHES AROUND NEW ZEALAND

As at 31 March 2021



Volunteers

Volunteers are the heart and soul of Bellyful and deliver all services across our 24 Bellyful branches.

Each branch has from 10 to 40+ volunteers, with a total of 676 active volunteers across Aotearoa at 31 March 2021. Volunteers lead and support the branch, cook and deliver meals, and fundraise. We value their commitment, passion and incredible range of skills that they so freely gift.

Referrals for Bellyful's Service

Bellyful receives referrals from a wide range of people and organisations including health professionals such as Plunket nurses, midwives, social workers, neo-natal units, post-natal

services, maternal mental health services and other community services and organisations. Bellyful also receives referrals from pre-schools, grandparents, friends, extended whānau, work colleagues and the whānau themselves. Referrals are usually made via our website or via a phone call to our 0508 Bellyful number.

Community

Bellyful is all about community. We help our recipient whānau feel connected to and supported by their communities, through our local networks of caring volunteers, referrers, local businesses, funders and supporters. We are a truly community-based charity.

How Bellyful NZ works

Main Sources of Bellyful NZ's Cash and Resources

Bellyful NZ's primary sources of funding are grants, donations, local branch fundraising events and sponsorship.

Grants

Grants are a key source of income, benefiting both branch operations and assisting with shared services costs.

Donations

Donations are received from a variety of sources including:

- corporate supporters
- directly from individuals and groups via our website
- as a partner charity for the One Percent Collective and The Good Registry

Donated Goods and Services

Bellyful NZ receives a variety of donated goods and services including ingredients for the meals we cook, food items, prizes for our fundraising activities and discounted professional services.

Sponsors

Freedom Furniture was Bellyful NZ's corporate partner from 2016 until the end of FY 2020. It collected donations from the public and sold a range of Bellyful NZ products through its stores, from which all proceeds were donated directly to Bellyful NZ. The consequences of the lockdowns caused by COVID-19 meant that Freedom Furniture terminated its arrangement with Bellyful NZ in March 2020.

Local businesses sponsor many of our Bellyful branches and we are very grateful for their contributions, both financial and donated goods or services. For example, small businesses have donated space to store our freezers, provided a kitchen for free, paid for the cost of whole Cookathons, or for a particular ingredient, provided supermarket vouchers or made regular donations. Whatever the contribution, large or small, we appreciate and thank these local businesses and their owners.

We are also grateful for the many schools, churches, marae and other community facilities that have allowed us to hold our Cookathons for no charge, or at a heavily discounted rate.

Fundraising

Funds raised at branch level are retained and used in the local communities. Branch fundraising activities include movie nights, quiz nights, photo shoots, cake stalls, sausage sizzles, raffles and catering for events.

During 2020 we were unable to hold most events of this type, because of the COVID-19 lockdowns and alert level changes and the consequential risk of planning an event that may have to be cancelled at short notice. This impacted the funding of our branches and meant they had to rely much more on donations and local grant funding. As demand for our meals has increased during 2020/2021, this has meant that some of our branches are struggling with funding.

Wage subsidy

In the 2021 financial year we received the COVID-19 wage subsidies for our three part-time staff. This totalled \$30,432.

HOW BELLYFUL WORKS



1 Volunteers gather at community kitchen and prepare delicious and nutritious macaroni cheese, beef bolognese sauce, beef lasagne and tomato and red lentil soup.



2 Carefully packaged meals are stored in a large freezer, waiting to be delivered to whānau in need.



3 Local whānau welcomes new baby or needs support due to serious illness, unforeseen circumstances etc.



4 Bellyful receives referral, via the Bellyful website, or by phone, from the whānau, someone close to them or an advocate eg Plunket, midwife.



5 Committed Bellyful volunteer arrives at the whānau's door with some meals and smile.



6 A couple of weeks later, Bellyful volunteer contacts the whānau to see how they are getting on and whether they need more Bellyful meals.



Bellyful Testimonial

“My daughter had her 4th surgery last week and we really struggled with surgery number 3, so my friend referred us through for some pre-made meals. Thank you so much for your help - it was one less thing to stress about. You guys do such a great job and I know it would be a great help to a lot of families.”

Message to Bellyful Hutt Valley, David, Sophia & little Indie



He taonga rongonui
te aroha ki te
tangata.

Goodwill towards
others is a precious
treasure

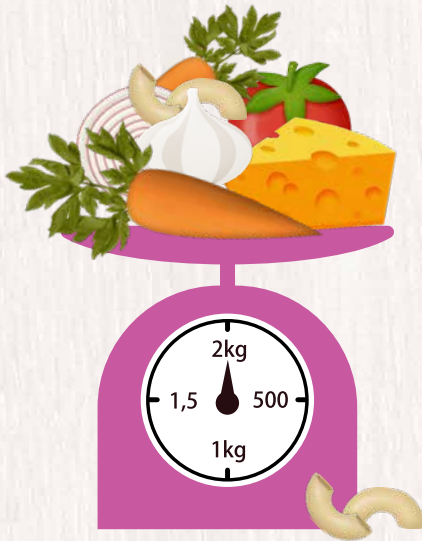
Māori Proverb



THANK YOU

YOUR SUPPORT HAS ENABLED OUR
24 New Zealand branches to supply...

24,993 MEALS  **TO**  **4,344** WHĀNAU 



INGREDIENTS WE USED...

4,200 KGS of mince
2,520 KGS of grated cheese
8,400 JARS of pasta sauce
4,200 ONIONS (a lot of tears!)
4,200 LITRES of milk
420 KGS of butter
8,400 grated carrots

WE HAD **676**
VOLUNTEERS GIVE...

65,280

*hours of their time to help
others in their community
through Bellyful.*

VOLUNTEER
SATISFACTION

86%

*of volunteers satisfied or very satisfied
when surveyed in August 2020*.*

* This is a small decrease from the previous year, and
result of various COVID-19 lockdown frustrations.



We are only able to do this because of the phenomenal support & sponsorship Bellyful has received from businesses, charitable trusts and individuals in our wonderful New Zealand community.

STATEMENT OF SERVICE PERFORMANCE

'What did we do?' and 'When did we do it?'

Bellyful NZ delivered on its mission to cook and deliver meals to whānau with babies or young children, who need support.

BELLYFUL NZ OUTPUTS

<i>Description and Quantification of the Entity's Outputs</i>	<i>2020/21</i>	<i>2019/20</i>
	<i>Actual</i>	<i>Actual</i>
Referrals received	5,192	5,513
Whānau assisted	4,344	4,663
Meals delivered	24,993	26,219
Cookathons held	200	242
Communities served	24	24
Active volunteers	676	706

When Bellyful receives a referral, we check to ensure that the need is consistent with our mission and our delivery areas, before offering to provide meals. This explains the difference between referrals received and whānau assisted.

The reduction in referrals received and meals delivered this year is due to the six-week Level 4 lockdown when, for the safety of our volunteers and the communities we serve, we were only able to deliver to a small number of very high needs whānau.



Bellyful Testimonial

"So grateful for Bellyful! Our Plunket nurse referred us as my husband is away 5.30am-6.30pm for work and we have a five-week-old baby and no family support. A lovely volunteer dropped off a stack of amazing home cooked meals for our freezer today, like magic! Thank you so much."

Bellyful Dunedin recommendation, Bonnie Thomas, November 2020

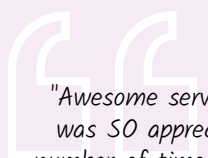
2020 Recipient Survey Results



Of Bellyful recipients felt that Bellyful didn't judge them or their situation.



79% said Bellyful made them feel part of the community.



"Awesome service that was SO appreciated a number of times, without judgement or questions, thank you so much."



"Due to COVID-19, we had a contactless delivery of meals, but was so blessed to still be able to receive them. It made life so much easier with a newborn and toddler in the house."



Of recipients said they could focus on caring for their baby.



Of recipients said Bellyful made them feel cared for.



Of recipient whānau have a new baby.



Of recipient whānau describe themselves as Māori or Pasifika.

"Having a fairly traumatic birth, a longer than expected hospital stay, and adjusting to life with newborn twins in level 4 lockdown without family support (our families live in other parts of the country), having Bellyful deliver us meals made such a huge difference for my partner and I. We felt really isolated and yours was one of the only services we could access. It made us feel so much more supported and like a big hug in the middle of a whole lot of crazy. Thank you so much!"

"Absolutely incredible service! We are so grateful. It helped us more than you will ever know. Thank you, thank you, thank you!"

Outcomes 2020 RECIPIENT & REFERRER SURVEY

To understand the impact we are having and ensure we are focusing our efforts in the right place, Bellyful is working with Research New Zealand to survey our recipients and referrers.

Research New Zealand carried out a pilot study including interviews with recipients, referrers and volunteers in July to August 2019. This has been followed up with quarterly surveys of recipients and referrers and we now have data from five surveys plus the pilot.

The results show Bellyful has consistently high levels of trust and confidence from both referrers and recipients.

The research has provided helpful insights into our impact:

- The majority of our recipients say having Bellyful meals at hand allowed them to focus on caring for their baby (95%) and spend quality time with their other children (88%).
- 97% felt Bellyful did not judge them, 93% said Bellyful made them feel cared for and 90% said Bellyful provided a break when they needed it most.
- 96% of referrers in the survey tell us we are filling an important gap in the services that are available to whānau in need, and 96% say that referring a whānau is a simple process.

We are incorporating the survey results into our strategic planning, including the need to improve our accessibility, e.g., by new diverse meal options, and improving our referral process, so the service level is consistent across the country.

We are committed to continuing to survey our recipients and referrers to ensure we are focusing our resource on maximising impact.

The stories and testimonials from recipient whānau included in this report provide further examples of the impact Bellyful has on whānau when they are feeling exhausted and vulnerable.

Volunteer Survey

We survey our volunteers annually on the impact Bellyful has on them in our Volunteer Engagement Survey. In 2020/21, 86 percent of our volunteers rated themselves as satisfied or very satisfied, a decrease of five percentage points on the previous year, due to various frustrations caused by the COVID-19 lockdowns.



Tania's Story

A WEIGHT OFF THE SHOULDERS

Being a working parent can be a real juggle. Getting the kids ready for school, arriving at work on-time, making your way through that growing laundry pile after you've rustled up a half-way decent evening meal for the whānau. Things are pretty hectic at the best of times and it doesn't take much for the balance to tip.

Tania is mum to six-year-old Nikau and four-year-old Kaia. When her partner arrived home from his rugby-league game with a knee injury she knew things were about to get difficult. "My partner had torn his LCL & PCL and ruptured his ACL as well as severely damaging a nerve in his knee, causing a severe foot drop. He had to have knee surgery to repair his LCL & PCL and reconstruct his ACL. So it was quite serious," says Tania.

Then Tania's son fell and broke his arm in two places. Another trip to the hospital, this time for surgery on Nikau's arm. "My son was off school for five weeks and work was really busy, so I couldn't take much leave. So it was just lucky that Nikau's Dad was off work on ACC recovering from his own surgery. I was starting to get pretty stressed about everything" says Tania. A friend and co-worker of Tania's then referred the whānau to Bellyful.

"At first I found it hard to accept help. I felt there must be others out there that needed it more than us, and that I could handle everything myself. But it was such a huge weight off my shoulders when the meals arrived. Something as simple as having dinner in the freezer ready to heat up at the end of the day - not having to worry about cooking for a few nights," says Tania.

Bellyful Taupō delivered Tania's whānau Lasagne, Macaroni Cheese and Beef Bolognese. "The meals were delicious and the portion-sizes were really



generous. They even checked if we had any particular dietary needs, like gluten free or vegetarian."

Fortunately, life is now back to normal for Tania and her family. Her partner has returned to work and her children are in back in their routine.

*Words by Katy Glenie
Image supplied*

"Having the support of Bellyful was the best thing that could have happened to us during that time. I'd like to say a huge thank you to all the volunteers that take time out of their busy lives to cook and deliver meals to those that need them. You're amazing!"





Laura's Story

WELCOMING TWINS UNDER COVID-19 ALERT LEVEL 3

Words by Rebecca Foley
Image supplied



Laura's family in the UK were due to fly out to support her with the birth of her twins in May 2020, but COVID-19 threw a spanner into that plan. With New Zealand's border essentially closed under Alert Level 4, her family members cancelled their travel.

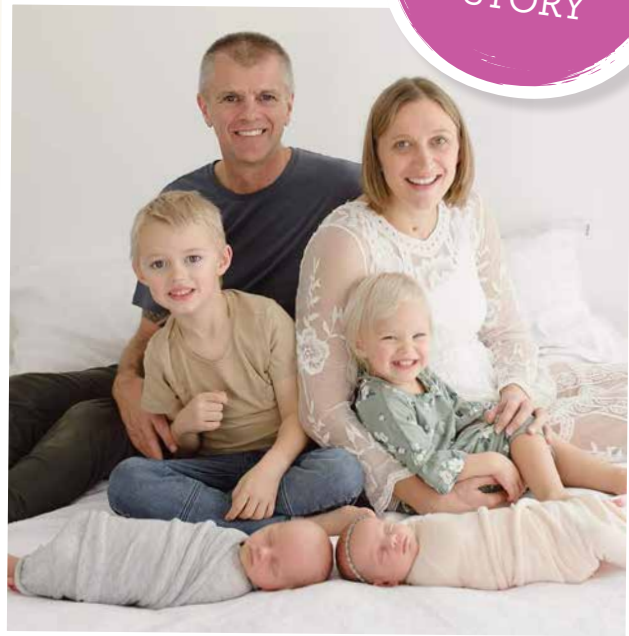
Laura and her husband David have lived in New Zealand for 12 years and originally hail from the United Kingdom.

Over the past five years, they have expanded their whānau to include a now five-year-old son and a two-year-old daughter. Then, the number of children in the family doubled in size with the arrival of twins – a boy and a girl.

Instead of being surrounded with broader family support Laura gave birth to her twins during COVID-19 Alert Level 3 and was quickly back at home with all four children.

Laura was referred to Bellyful by the Multiple Births Club and under COVID-19 Alert Level 2, was able to be delivered three meals with enough left over for lunches. Given the unique situation in which Laura and her husband welcomed their new twins, the arrival of meals at the door was a godsend.

"We are so busy in the evenings with trying to feed everyone. Having the delicious freezer meals relieved the stress. All new mums should



have access to this amazing service. I'd tell anyone who needs some support to definitely get in touch."

It is likely to be some time before Laura's family can visit and meet the new additions to the whānau. But in the meantime, Laura has been referred again to Bellyful by a friend and is already looking forward to the peace of mind it will bring for those super busy evenings with four little ones.

Bellyful Testimonial

"After the birth of our twin boys life was pretty hectic, we had just moved into the Franklin region and were soon to open a new business. Adjusting to the new 'normal' of having three kids under three was very full on and it was a huge delight when we received a delivery from Bellyful.

Every parent knows that when you get to the end of the day the last thing you feel like doing is cooking, so to have some nutritious meals waiting in the fridge was a life saver. It was a really heart-warming experience and made us feel very fortunate for the kind and caring people who went out of their way to help us."

Tim Wilson from New World Pukekohe, awesome supporters of Bellyful Franklin



Image supplied



VOLUNTEER APPRECIATION & RECOGNITION

Volunteers are the heart of Bellyful and we couldn't do what we do without them. Each and every volunteer has made a valuable contribution, whether it is reliably turning up at Cookathons, delivering meals in bleak wintry weather, or cooking sausages outside a local hardware store at 9am on a Saturday morning. It doesn't matter whether they give 30 mins or 10 hours a week, every contribution is important. Many volunteers have also helped with behind-the-scenes roles at both branch and Bellyful NZ level such as social media, treasurer, grant applications, writing and photography for stories, editing our newsletters, helping with the recipients and referrer survey, and organising Bellyful's Regional Meetings. We would like to extend our sincere thanks to these generous individuals for so willingly sharing their skills and time.

To recognise our volunteers' dedication and commitment, in 2018 we introduced the Bellyful Heart Awards. In 2020 we planned to present our Heart Awards at our Training Weekend that was due to be held in Christchurch in May 2020 but had to be cancelled because of the COVID-19 lockdowns. Instead, these awards were presented to our volunteers at branch level.



Photos from some of the Heart Award presentations at branches around Aotearoa.

AWARDS

During 2020 many external award functions were cancelled or downsized. We were thrilled to receive the following awards:

Marilyn Trent

Recipient Coordinator of Bellyful Christchurch – Volunteering Canterbury Volunteer Recognition Award 2020



Marilyn receiving her award.

Bellyful New Zealand Trust Runner up Tier 3 New Zealand Charity Reporting Awards 2020 (winner for 2018 and 2019 reports)



Aruna Hill, Bellyful NZ Finance Officer receiving the certificate from Mike of Chartered Accountants Australia and NZ (CAANZ) at a Porirua Cookathon in June 2020.

OUR AMBASSADOR

We are very privileged to have Pippa Wetzell as our Bellyful Ambassador for the past 9 years.



Pictured at right: Pippa with Bellyful Founder Jacqui Ritchie.



Bellyful Testimonial

"This is a vital service for times when whānau are at crisis point. Your service can pull whānau back from the edge of the cliff. Very grateful to have your service in our community. It is making a huge difference to whānau and tamariki. Thank you."

Bellyful Referrer, December quarter survey

THANKING OUR DONORS, SPONSORS & SUPPORTERS

It is only because of the wonderful support we receive from our donors, sponsors, grant providers and supporters, that our volunteers are able to provide meals, at no cost, to whānau that need support in our communities.

We would like to acknowledge those funders that continued to support us through the turbulence and insecurity of 2020, particularly during the first six months when so much was unknown. In particular we would like to thank:

One Percent Collective – for paying donations out monthly rather than quarterly

Pelorus Trust and CERT – for their understanding when we had to cancel our Training Weekend and not requiring a refund of grant funds used for flights. We have held these funds in credit with Air New Zealand and used them for our February and March 2021 Regional Meetings.

BELLYFUL & ONE PERCENT COLLECTIVE



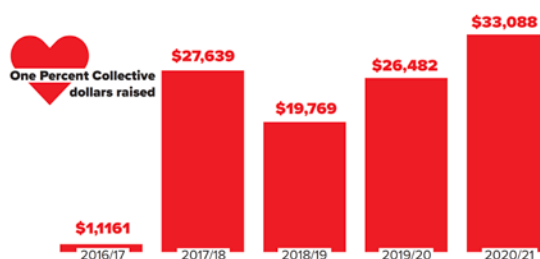
“One Percent Collective exists to simplify regular giving and to inspire generosity in Aotearoa. Partnering with small to medium sized Kiwi-based charities, our 700 donors have collectively raised over \$2 million for charity. It’s a pleasure to support Bellyful as one of our 14 partner charities. The impact Bellyful has on the lives of thousands of people in Aotearoa makes our hearts warm and reading their impact stories from those who have been impacted through Bellyful, brings the biggest smile to our face. Our Collective donors have contributed more than \$100,000 to Bellyful and we are excited to see the donations continue to grow. Thanks for all the great work you do Bellyful :)”

**Pat Shepherd, Chief Doer of Things,
One Percent Collective**

National Sponsors, Donors and Grant Providers

Bellyful NZ is thankful to have the following fantastic partners, sponsors and grant providers who support Bellyful nationally:

- **One Percent Collective** – Bellyful NZ is very appreciative of being a One Percent Collective charity partner since December 2016. The collective encourages donors to donate 1% of their income to charities and uses stories and events to connect donors with charities.



- **Lottery Grants Board** – has provided Bellyful NZ a three-year (2017-2020) Lottery National Community grant towards volunteer support, training & CE costs.
- **Lotteries Wellbeing Fund Covid 19** – \$40,000
- **Simplicity Charitable Trust** – \$12,000
- **QBE Foundation** – \$10,000

Other national or multi-branch sponsors, donors and grants include:

- Wellington Community Trust - \$10,000
- Jack Jeffs Trust - \$7,500
- Thomas George McCarthy Trust - \$10,000
- Trust Waikato - \$5,500
- Community Trust South - \$1,000
- Hutt Mana Charitable Trust - \$2,000
- Wellington City Council Social & Rec Fund - \$7,869
- Bay Trust - \$7,500
- Pub Charity - \$3,400
- MSD Community and Resilience Fund - \$4,800
- John Illott Charitable Trust - \$2,000
- The Good Registry - \$1,575.85
- iPayroll Giving - \$2,859

Founding Sponsors:

- Doppel Ltd – Angela Vink - \$3,720
- Sticky Labels - \$1,500

Branch Sponsors, Donors, Grant Providers and Supporters

Each Bellyful branch is supported by local businesses, community groups, trusts, and individuals who provide sponsorship, donate cash or goods, grants, free venues and discounted services. We are truly grateful for this wonderful local support. In addition to the supporters listed below, some donors wish to remain anonymous, so you know who you are and we thank you from the bottom of our hearts.

★ *This star indicates supporters who have been backing their local Bellyful branches for five years or more - thank you so much!*



Bellyful Hibiscus Coast

Supporters:

Nick Ebert Harcourts Cooper & Co
COGS

Bellyful North Shore

Supporters:

Lister Presbyterian Hospital Trust
Milford Centre
COGS
Bunnings Warehouse North Shore
East Coast Albany Bays Inner
Wheel Club

Bellyful West Auckland

Supporters:

★ Te Atatu Peninsula Community Trust
★ BMS-IT
The Trusts
COGS

Bellyful Central Auckland

Supporters:

Derek Helliwell & Cathy Giles.
Barfoot & Thompson
Albert-Eden Local Board
John Filmore Contracting
Wild Wheat Mt Eden
Kerr Taylor Foundation
COGS

Bellyful North Waikato

Supporters:

★ St Paul's Huntly
Envisage Photography
Trust Waikato

Bellyful Hamilton

Supporters:

Carroll Carpentry Limited
Crossroads Church
COGS
Trust Waikato

Bellyful Whitianga

Supporters:

New World Whitianga
Mercury Bay Area School
Mercury Bay Marine Limited
Fagans Furniture
The Mercury Bay Informer
The French Fig
Coromilk
Lodge Whitianga
Whitianga Self Storage
COGS
Trust Waikato
Walker Electrotec
East Coast Automotive
Peninsula Homekills Coroglen
Happy Local Limited
Kiwiway of Life Photography
St Andrews Church Op Shop
Hahei Beach Ratepayers
Riverlee Early Learning Centre
Thames-Coromandel District Council

Bellyful Tauranga

Supporters:

★ Cherrywood Butchery
★ Good Neighbour Trust
★ Acorn Foundation
★ Legacy Trust
Bay Venues Ltd
TrustPower Community Trust
Bay Trust
COGS
The Mike Pero Foundation
MacKay Strathnaver Trust
Ballance Agri-Nutrients
Mount Maunganui Lioness Club
BOP Regional Council
Methodist Church
Baptist Church Gresham

Bellyful East Auckland

Supporters:

★ Howick Tyres
★ Wild Wheat Howick
★ Salvation Army
New World Botany
New World Howick
Howick Local Board
Ray White Beachlands
Kennerley Retail Investment Group
Takutai Charitable Trust

Bellyful Franklin

Supporters:

★ St. Patricks Catholic Church
★ Rural Supplies Pukekohe
★ Designer Flowers
★ Pukekohe Travel
Wilcox
Franklin Local Board
New World Pukekohe
Rick Hale Residential Sales
Lions Club of Pukekohe
MGB Cheffing
COGS

We particularly wish to acknowledge the **Community Organisations Grant Scheme (COGS)** which in 2020 supported our branches with grants totaling **\$53,200.**

Thank you!

Bellyful Taupo

Supporters:

Abbie Treloar Real Estate
Taupo Nui A Tia College
NZ Certified Builders
Taupo Smash Repairs
COGS
The Source Taupo
TRAFF1K D1G1TAL
Taupo Family Playcentre
Christian Motorcycle Association-
Taupo Chapter

Bellyful Napier

Supporters:

- ★ Downey's City Butchery
- ★ Taradale Anglican Church
- ★ PAK'nSAVE Napier
- ★ Mr Labels
COGS

Bellyful Porirua

Supporters:

- ★ Sarah Searanke Catering
- ★ St. Andrews Church Plimmerton
New World Tawa
Hutt Mana Charitable Trust
Collective First National-Mills
Gibbon & Co Limited
Trust House Foundation
Food Together
COGS
New World Porirua
Z Energy
Lions Club Mana
Jack Jeffs Charitable Trust
Greater Wellington Regional
Council

Bellyful Hutt Valley

Supporters:

Upper Hutt City Council
Hutt Baptist Church
COGS
Jack Jeffs Charitable Trust
Greater Wellington Regional
Council

Bellyful Nelson

Supporters:

Michael Vesty, Barrister
Total Decorating Nelson Limited
Debug Nelson Limited
ShiftOn
Waimea Nurseries
Lions Club Nelson North
Lioness Club Nelson

Bellyful Karori

Supporters:

- ★ Sweet Bakery and Cakery
- ★ St John's Op Shop Trust
- ★ New World Karori
- ★ Karori Baptist Church
COGS
Z Energy
Samuel Marsden School
Karori Arts + Crafts
Soroptomists Wellington
Jack Jeffs Charitable Trust
Greater Wellington Regional Council

Bellyful Wellington North

Supporters:

Team YIP Real Estate
Newlands Intermediate School
New World Newlands
Freemasons Johnsonville
US2U
COGS
Johnsonville Charitable Trust
Jack Jeffs Charitable Trust
Greater Wellington Regional Council

Bellyful Wellington South

Supporters:

- ★ Eketahuna Country Meats
- ★ Wellington South Baptist Church
- ★ New World Wellington City
Kaibosh
Plimmer House, Scots College
COGS
Jack Jeffs Charitable Trust
Greater Wellington Regional Council

Bellyful Waimakariri

Supporters:

New World Rangiora
Rangiora High School
Property Brokers Rangiora
Mainpower Community Fund
The Warehouse Rangiora
Rangiora Lions
Soroptomists North Canterbury
COGS
John Filmore Contracting
The Gardners 2016 Limited
Craig's Investment Partners
Hi Flo Plumbing

Bellyful Christchurch

Supporters:

- ★ Fresh Connection
- ★ Trent Builders
- ★ Christchurch Boys High School
- ★ Joes Garage
Foodstuffs Community Trust
Brand New Day Limited
Orion New Zealand Limited
Christchurch City Council

Bellyful Selwyn

Supporters:

- ★ Fresh Connection
- ★ Selwyn District Council
New World Lincoln
Foodstuffs
COGS
Brand New Day Limited

Bellyful Geraldine

Supporters:

- ★ Geraldine Butchery
- ★ Waihi School
- ★ Richard and Susan Tregenza
- ★ Freshchoice Geraldine
COGS

Bellyful Dunedin

Supporters:

- ★ New World Mosgiel
- ★ Fresh Choice Green Island
- ★ Firebrand
- ★ Veggie Boys
Queen's High School
Bendigo Valley Foundation
Petridish
Tuapeka Gold Print
Craigs Investment Partners
COGS
Ballance Agri-Nutrients
Zonta Club

Bellyful Invercargill

Supporters:

- ★ Age Concern
New World Elles Road
Splash Palace
Community Trust South
Mandy Jordan - Mortgage
Supply Co. Southland
COGS
VAT Farming Limited
Salford School



“Unless someone like you
cares a whole awful lot,
nothing is going to get
better. It’s not.”

Dr. Seuss



Approval of Performance Report

THE BELLYFUL NEW ZEALAND TRUST

For the year ended 31 March 2021

The Board of Trustees are pleased to present the approved Performance Report including the historical Performance Report of The Bellyful New Zealand Trust for year ended 31 March 2021.

The Trustees are solely responsible for the information contained in this financial report and have determined that the accounting policies used are appropriate for the purpose that the Performance Report is prepared.



Michelle Kitney
Chair of the Board

17 September 2021



Carolyn Stiles
Treasurer

20 September 2021

STATEMENT OF FINANCIAL PERFORMANCE

'How was it funded?' and 'What did it cost?'

THE BELLYFUL NEW ZEALAND TRUST

For the year ended 31 March 2021

	Notes	Actual 2021	Actual 2020
REVENUE			
Donations, fundraising and other similar revenue	1	215,109	286,671
Grants for providing goods and services	1	129,107	201,439
Interest	1	1,065	3,876
Other revenue	1	31,471	1,218
Total Revenue		376,752	493,204
EXPENSES			
Expenses related to public fundraising	2	10,851	27,678
Volunteer and employee related payments	2	187,635	251,216
Expenses related to providing meals	2	151,340	164,263
Shared service costs	2	36,322	91,876
Total Expenses		386,148	535,033
(DEFICIT) Surplus for the Year		(9,396)	(41,829)

The accompanying notes form part of this Performance Report and should be read in conjunction with the Auditor's report.



Bellyful Testimonial

"A bag full of yummy food was delivered to me on Monday and I wasn't able to thank anyone due to covid level 2 and being contactless. The food was a HUGE help! I have a nine-week-old and a toddler at home and I was so rundown and sick (not with covid). The look on my toddler's face when she saw the cupcakes was priceless (she let out a squeal of excitement). Having meals for her ready-made just took so much pressure off me while tending to my baby. Thanks again Bellyful!"

Thank you email, Zoe, March 2021

STATEMENT OF FINANCIAL POSITION

'What the entity owns?' and 'What the entity owes?'

THE BELLYFUL NEW ZEALAND TRUST

For the year ended 31 March 2021

	Notes	This year 31 March 2021	Last year 31 March 2020
ASSETS			
<i>Current Assets</i>			
Bank accounts and cash	4	378,675	277,109
Debtors and prepayments	4	3,251	37,037
Stock		4,424	11,592
Total Current Assets		386,350	325,738
<i>Non-Current Assets</i>			
Investments over 90 days	4	48,301	52,281
Property, plant and equipment	6	14,866	18,398
Total Non-Current Assets		63,167	70,679
TOTAL ASSETS		449,517	396,417
LIABILITIES			
<i>Current Liabilities</i>			
Creditors and accrued expenses	5	12,277	19,066
Leave liability		2,866	2,874
Income in advance	5	99,947	30,655
Total Current Liabilities		115,090	52,595
TOTAL LIABILITIES		115,090	52,595
Total Assets less Total Liabilities (Net Assets)		334,427	343,822
ACCUMULATED FUNDS			
Capital contributed by members	7	100	100
Accumulated surpluses	7	334,327	343,722
Total Accumulated Funds		334,427	343,822

The accompanying notes form part of this Performance Report and should be read in conjunction with the Auditor's report.

STATEMENT OF CASH FLOWS

'How the entity has received and used cash'

THE BELLYFUL NEW ZEALAND TRUST

For the year ended 31 March 2021

	<i>This year</i> 31 March 2021	<i>Last year</i> 31 March 2020
CASH FLOWS FROM OPERATING ACTIVITIES		
Receipts from donations, fundraising and sponsorship	244,829	267,422
Grants received	198,399	174,027
Interest	1,065	3,956
Receipts from other operating activities	-	-
Net GST	5,966	(1,004)
Cash was applied to:		
Payments to suppliers and staff	(352,001)	(506,957)
Net Cash Flows from Operating Activities	98,258	(62,556)
CASH FLOWS FROM INVESTING AND FINANCING ACTIVITIES		
Cash was received from:		
Receipts from maturity of investments	3,979	104,461
Receipts from the sale of plant and equipment	(41)	173
Cash was applied to:		
Payments to acquire property, plant and equipment	(632)	(2,990)
Payments to acquire investments	-	-
Total Cash Flows from Investing and Financing Activities	3,306	101,644
Net (Decrease)/Increase in Cash	101,566	39,088
CASH BALANCES		
Cash and cash equivalents at beginning of year	277,109	238,021
Cash and cash equivalents at end of year	378,675	277,109
Net Change in Cash for the Year	101,566	39,088

STATEMENT OF ACCOUNTING POLICIES

'How did we do our accounting?'

THE BELLYFUL NEW ZEALAND TRUST

As at 31 March 2021

Basis of Preparation

Bellyful NZ has elected to apply Public Benefit Entity Simple Format Reporting - Accrual (Not-For-Profit) on the basis that it does not have public accountability and has total annual expenses equal to or less than \$2,000,000 for the last two annual reporting periods. All transactions in the Performance Report are reported using the accrual basis of accounting. The Performance Report is prepared under the assumption that Bellyful will continue to operate in the foreseeable future.

Fundraising, grants and donations

Fundraising, grant income and donations are accounted for depending on whether or not it has a "use or return" condition attached. Where no use or return conditions are attached, the revenue is recorded as income when the cash is received. Where income includes a cash or return condition, it is initially recorded as a liability on receipt. The income is then subsequently recognised within the Statement of Financial Performance as the performance conditions are met.

Donated goods and services, including discounts on Recommended Retail Price given by suppliers due to Bellyful NZ being a charity, are recorded at the estimated value of the discount or free good or service. Sometimes this is obvious from the source document, if not the estimated value is based on costs paid for a similar item recently and/or estimated amount of goods received in the case of ingredients. Donated goods or services received for fundraisers and extra food items to include with meal deliveries have not been recorded, due to the difficulty of valuing these accurately.

Where significant donated assets are received with useful lives of 12 months or more, and the fair value of the assets is readily obtainable, the donation is recorded at the fair value of the asset obtained. Where the fair value of the asset is not readily obtainable, the donation is not recorded.

Interest income

Interest income is recognised on an accruals basis.

Other income

All other income is accounted for on an accruals basis and accounted for in accordance with the substance of the transaction.

Income Tax

Bellyful NZ is a registered charity under the Charities Act 2005, and accordingly is not subject to income tax.

Bank Accounts and Cash

Bank accounts and cash in the Statements of Financial Position and Cash Flows comprise cash balances and bank balances (including short term deposits) with original maturities of 90 days or less.

Goods and Services Tax (GST)

The entity is registered for GST. All amounts are stated exclusive of goods and services tax (GST) except for accounts payable and accounts receivable which are stated inclusive of GST.

Debtors

Debtors are carried at estimated realisable value after providing against debts where collection is doubtful.

Plant and depreciation

Plant is shown at cost or valuation less any accumulated depreciation.

Depreciation is provided on a diminishing value basis on all plant. Plant consists of freezers, food processors and gazebos for which the depreciation rate has been estimated at 25%.

Comparatives

Comparative information has been taken from the Performance Report for the year ended 31 March 2020. Certain amounts in the comparative information have been reclassified to ensure consistency with the current year's presentation.

NOTES TO THE PERFORMANCE REPORT

1. ANALYSIS OF REVENUE FROM DONATIONS, FUNDRAISING AND CORPORATE SPONSORSHIP

REVENUE ITEM	ANALYSIS	2021	2020	
<i>Donations and similar revenue</i>	Corporate donations			
	Z 'Good in the Hood' programme	-	23,524	
	Freedom Furniture - in shop	-	6,861	
	The Warehouse	-	1,255	
	Other corporate donations	39,754	17,756	
		39,754	49,396	
		Group donations		
	One Percent Collective	33,089	26,482	
	Methodist Women	300	16,035	
	Million Dollar Mission	-	14,050	
	Lionesss Clubs, Zonta, Inner Wheel, Soroptimists	6,738	6,047	
	Schools	2,982	5,773	
	Trusts	470	5,315	
	Others	6,160	2,817	
		49,739	76,519	
		Individual donations		
	General donations	30,209	13,439	
	Give-a-little donations	2,188	4,916	
	i-payroll giving	2,859	1,890	
	Regular personal donors	3,201	1,425	
	The Good Registry	1,040	1,254	
		39,497	22,924	
		Donated goods and services		
	Free or discounted goods and services	4,694	13,772	
	Donated meal ingredients	26,975	21,498	
		31,669	35,270	
		TOTAL	160,659	184,109



Bellyful Testimonial

"Thank you to the lovely ladies whom helped us when we really needed it. Giving us a good nutritious meal with such care and compassion was like Christmas for my hubby and me. We needed it so much. Just that short breather gave us so much quality rest and a sense of love from the community, like we weren't as alone as we felt. Thank you."

Bellyful Recipient, December quarter survey

REVENUE ITEM	ANALYSIS	2021	2020
Fundraising revenue	Movie nights	3,604	24,557
	Photoshoots	2,366	3,991
	Quiz nights	3,321	7,262
	Catering	594	4,622
	Bake sales & pie sales	1,743	4,080
	Sausage sizzle	272	2,921
	Raffles & auctions	887	3,110
	Ideal Cups	70	792
	Stalls	1,477	2,428
	Cookie jars	965	1,230
	XRACE & Scavenger Hunts	-	2,501
	Entertainment books	243	748
	Bride of the year	-	2,055
	Chocolate bars	761	827
	Christmas Promotions	5,345	482
	Lime Sales	2,037	-
	NZ Property Group Promotion	11,000	-
Various other events	2,116	5,722	
	TOTAL	36,802	67,328
Corporate sponsorship	National level		
	Freedom Furniture	-	17,406
		-	17,406
	Branch level		
	Joe's Garage	2,594	3,334
	BMS-IT	-	3,000
	John Filmore Contracting	3,295	2,584
	Team YIP Real Estate	2,087	2,087
	New World Wellington City	979	1,524
	Derek Helliwell & Cathy Giles, Barfoot & Thompson	730	862
	Total Decorating Nelson Limited	522	522
	Nic Ebert Harcourts Cooper & Co	2,207	435
	Collective First National - Mills Gibson & Co Limited	2,783	-
	Michael Vesty, Barrister	539	-
	ShiftON Limited	522	-
	Others < \$500	1,391	3,480
		17,648	17,828
	TOTAL	17,648	35,234
Total revenue from donations, fundraising and sponsorship		215,109	286,671

Notes to the Performance Report

REVENUE ITEM	ANALYSIS	2021	2020
Grants for providing goods and services	Acorn Foundation	1,250	1,266
	Acorn Grant	734	-
	Auckland Council - Albert Eden	237	663
	Auckland Council - Hibiscus and Bays	-	1,169
	Auckland Council - Franklin	837	163
	Auckland Council - Quick Response	589	-
	Auckland Foundation - Grass Roots Giving	-	10,000
	Auckland Foundation and The Funding Network	-	8,867
	Bendigo Valley	-	800
	CERT	4,000	-
	Christchurch City Council	358	2,642
	COGS	41,493	26,831
	Community Trust Southland	1,000	-
	Foodstuffs Community Trust	39	686
	Foundation North	-	5,000
	Greater Wellington Regional Council	1,445	-
	Hutt Mana Charitable Trust	2,000	-
	Jack Jeffs Trust	6,783	7,500
	Johnsonville Charitable Trust	991	2,029
	Kerr-Taylor Foundation	504	-
	Legacy Trust	1,000	1,438
	Lion Foundation	-	1,052
	Lotteries Discretionary	1,523	-
	Lottery Grants	37,860	44,078
	MacKay Strathnaver	745	3,645
	Mainpower	2,500	-
	North Shore Presbyterian Trust	-	1,000
	North Shore Seventh Day Adventist Church	-	705
	Pelorus Trust	1,300	-
	Pub Charity	2,500	-
	QBE Foundation	1,250	-
	Rata Foundaiton	906	9,400
	Selwyn District Council	217	322
	Simplicity Charitable Trust	-	32,966
	SkyCity Auckland Community Trust	-	7,500
	St Andrews Church Op Shop	382	-
	Tauranga Bay Trust	102	2,847
	TG McCarthy Trust	-	5,000
	Thames C.D.C.	500	-
	Trust House Limited	-	1,000
Trust Waikato	5,060	-	
United Way	2,000	45	
Vogelmorn	-	1,300	
Wellington City Council	7,566	-	
Wellington Community Trust	1,000	21,525	
West Support Fund	435	-	
TOTAL		129,107	201,439

REVENUE ITEM	ANALYSIS	2021	2020
<i>Interest Income</i>	Current accounts	161	161
	Term Deposits	903	3,715
TOTAL		1,065	3,876
<i>Other Revenue</i>	Covid Wage Subsidy	30,432	-
	Financial Report Award	1,000	1,000
	Survey Awards	80	-
	Sale of second hand equipment	-	101
	Gain on sale of asset	-	117
	Loss on sale of asset	(41)	-
TOTAL		31,471	1,218

2. ANALYSIS OF EXPENSES

EXPENSE ITEM	ANALYSIS	2021	2020
<i>Expenses related to public fundraising</i>	Branch Fundraising Events	10,026	27,128
	Donation service fees	772	404
	Other fundraising costs	53	146
TOTAL		10,851	27,678
<i>Volunteer and employee related payments</i>	Staffing	162,003	199,385
	Training	12,441	5,827
	Volunteer appreciation	8,863	39,419
	Volunteer recognition awards	558	844
	Volunteer mileage	3,770	4,960
	Aprons and t-shirts	-	695
	Catering	-	86
TOTAL		187,635	251,216
<i>Costs related to providing meals</i>	Depreciation	4,573	5,816
	Design costs - Branch	1,913	3,723
	Food Purchases	109,909	112,800
	General Expenses	167	-
	Health & Safety	615	1,322
	Packaging costs	17,974	21,600
	Printing & Stationery - Branch	4,293	4,898
	Telephone - Branch	2,384	4,287
	Utensils/Cooking Equipment	5,937	6,867
	Venue Hire - For Cooking	3,576	2,950
TOTAL		151,340	164,263

2. ANALYSIS OF EXPENSES *continued...*

EXPENSE ITEM	ANALYSIS	2021	2020
<i>Shared service costs</i>	Advertising - National	434	639
	Audit Fees	2,160	2,190
	Bank Fees & Charges	416	485
	Board costs	3,976	17,735
	Design costs - National	6,075	9,243
	General expenses	-	2,319
	Insurance	1,680	1,640
	Marketing and communication	2,513	9,183
	Printing & Stationery - National	1,952	709
	Research project	1,500	30,377
	Shared office space	-	1,079
	Subscriptions and memberships	669	577
	Telecommunications - National	2,379	1,719
	Travel - National	1,619	7,356
	Website, Software & IT support	10,950	6,625
	TOTAL	36,322	91,876

3. BRANCH CONTRIBUTION TO SHARED SERVICES COSTS

EXPENSE ITEM	ANALYSIS	2021	2020
<i>National Office levies for shared service</i>	Annual fee received from Branches	27,900	26,700
	Levy from Branches to cover National Event	1,150	-
	TOTAL	29,050	26,700

4. ANALYSIS OF ASSETS

ASSET ITEM	ANALYSIS	2021	2020
<i>Bank accounts and cash</i>	Bellyful NZ National Office		
	Current accounts	157,105	73,461
	Term deposits more than 90 days (non current)	37,761	36,959
	Branches		
	Current accounts	221,570	203,648
	Term deposits more than 90 days (non current)	10,540	15,322
	TOTAL	426,976	329,390
<i>Total debtors and prepayments</i>	Accounts receivable	1,562	2,533
	Other receivables	100	7,385
	GST receivable (payable)	(510)	5,456
	Prepayments	2,099	21,663
	TOTAL	3,251	37,037

5. ANALYSIS OF LIABILITIES

LIABILITY ITEM	ANALYSIS	2021	2020
<i>Creditors and accrued expenses</i>	Accounts payable	9,355	15,681
	Accrued expenses	2,922	3,385
TOTAL		12,277	19,066
<i>Income in advance</i>	<i>Grants received but not fully spent at year end</i>		
	Acorn Foundation	-	734
	Auckland City Council	3,266	844
	Bay Trust	7,500	-
	CERT	-	4,000
	Christchurch City Council	-	358
	Community Organisation Grants (COGS)	7,501	3,153
	Foodstuffs	-	39
	Jack Jeff Charitable Trust	717	-
	John Illot Charitable Trust	2,000	-
	Johnsonville Charitable Trust	1,980	2,971
	Kerr-Taylor Foundation	308	-
	Legacy Trust	-	1,000
	Lotteries Board	40,000	-
	Lottery Grants	-	1,523
	MacKay Strathnaver	-	745
	MSD - Community Capability and Resilience Fund	4,800	-
	Pelorus Trust	-	5,300
	Pub Charity	900	4,000
	Public Trust (TG McCarthy)	10,000	-
	QBE Foundation	8,750	-
	Rata Foundation	-	1,001
	Selwyn District Council	523	740
	St Andrews Church Op Shop	118	-
	Tauranga Bay Trust	-	102
	Trust House Limited	440	-
	Upper Hutt City Community Grant	841	-
	Wellington City Council	10,304	-
	Wellington Community Trust	-	1,000
	<i>Other income in advance</i>		
	Movie tickets purchased for fundraising event	-	3,145
TOTAL		99,947	30,655

6. PLANT AND EQUIPMENT

ASSET CLASS	Opening Carrying Amount	Purchases	Sales/Disposals	Current Year Depreciation & Impairment	Closing Carrying Amount
This year - Plant and equipment					
Freezers	16,074	1,082	41	4,025	13,090
Food Processors	1,405	-	-	318	1,087
Gazebos	919	-	-	230	689
TOTAL	18,398	1,082	41	4,573	14,866
Last year - Plant and equipment					
Freezers	17,959	3,266	57	5,094	16,074
Food Processors	1,821	-	-	416	1,405
Gazebos	1,225	-	-	306	919
TOTAL	21,005	3,266	57	5,816	18,398

Significant Donated Assets Recorded

The value of donated goods and services has only been recorded in this Performance Report, when the value is easily determined. A description of the entities supporting Bellyful in this way are detailed earlier in this report.

Significant Donated Assets - Not Recorded

There were no significant donated assets not recorded during this year.

7. ACCUMULATED FUNDS

	Capital Contributed by Members	Accumulated Surpluses or Deficits held at Branch level	Accumulated Surpluses or Deficits for National Office	Total
This year				
Opening balance	100	246,576	97,146	343,822
Surplus/(deficit)	-	(10,235)	839	(9,396)
Closing balance	100	236,341	97,985	334,426
Last year				
Opening balance	100	225,303	160,248	385,651
Surplus/(deficit)	-	21,273	(63,102)	(41,829)
Closing balance	100	246,576	97,146	343,822

Branch reserves total \$236,341 and are retained at branch level for future operating needs. National office reserves total \$97,985. These reserves have been purposely accumulated to provide a safety buffer for future shared service costs related to the paid roles within the charity. These include the General Manager, Finance Officer, Communications Advisor and Administration Officer. In the past, these have been funded by grants and corporate sponsorship, which are not guaranteed in future years. The annual budgeted costs for these four roles is approximately \$144,000.

8. COMMITMENTS AND CONTINGENCIES

COMMITMENTS	EXPLANATION AND TIMING	At balance date THIS YEAR	At balance date LAST YEAR
Commitments to repay grants received, if they are not fully spent.	Grants not fully spent are shown as income in advance in the statement of financial performance.	99,947	30,655

Contingent Liabilities and Guarantees

There are no contingent liabilities or guarantees at the balance date (Last year - Nil).

9. RELATED PARTIES

A related party transaction is a transfer of money, goods or services between a charity and those who are closely associated with it.

Description of related party relationship	Description of the transaction (whether in cash or amount in-kind)	Value of transaction this year	Value of transaction last year
Trustees	Regularly provided their time and skills to the oversight and operation of the Trust at no charge.	-	-
Chief Executive	Paid as a contractor, on a part-time basis. 1st April - 30th September 2020.	40,406	88,762
Funding Resource	Paid as a contractor, on a part-time basis.	3,282	-

10. EVENTS AFTER THE BALANCE DATE

There were no events that have occurred after the balance date that would have a material impact on the Performance Report (Last year - nil).

11. ABILITY TO CONTINUE OPERATING

The entity will continue to operate for the foreseeable future.

AUDITOR'S REPORT

Page 1/2



P O Box 217-125, Botany Junction Auckland 2164
peter@charityaudit.nz www.charityaudit.nz
(09) 232-2668 (027) 568-2538



INDEPENDENT AUDITOR'S REPORT

To the Trustees of the BELLYFUL NEW ZEALAND TRUST for the year ended 31 March 2021

Report on the Performance Report

Opinion

We have audited the performance report of the BELLYFUL NEW ZEALAND TRUST on pages 6 to 37, which comprise the entity information [About Bellyful – How Bellyful Works] and the statement of financial position as at 31 March 2021, the statements of service & financial performance, along with a statement of cash flows for the year ended, the statement of accounting policies and other explanatory information.

In our opinion except for the matters outlined in the basis for a qualified opinion:

- a) the reported outcomes and outputs, and quantification of the outputs to the extent practicable, in the statement of service performance are suitable;
- b) the performance report on pages 6 to 37 presents fairly, in all material respects:
 - the financial position of the BELLYFUL NEW ZEALAND TRUST as at 31 March 2021 and of its financial performance and cash flows;
 - the entity information and the service performance, for the year ended,

in accordance with Public Benefit Entity Simple Format Reporting – Accrual (Not-For-Profit) [PBE-SFR-A-NFP] issued in New Zealand (NZ) by the NZ Accounting Standards Board.

Basis for a Qualified Opinion

We believe that the audit evidence we have obtained is sufficient and appropriate to provide a basis for our opinion, except that our audit work has been limited in the:

- verifying of the completeness of recording for unreceipted cash sources of income such as anonymous donations, and fundraising, where the accounting controls are limited until the cash is banked, and there are no practical audit procedures to gain evidence on the completeness of cash income,
- verifying the value of donated food given the limitations of documenting and accounting for items received.

We conducted our audit of the statement of financial performance, statement of financial position, statement of cash flows, statement of accounting policies and notes to the performance report in accordance with International Standards on Auditing (NZ), and the audit of the entity information and statement of service performance in accordance with the International Standard on Assurance Engagements (NZ) ISAE (NZ) 3000 (Revised). Our responsibilities under those standards are further described in the *Auditor's Responsibilities for the Audit of the Performance Report* section of our report. We are independent of the BELLYFUL NEW ZEALAND TRUST in accordance with Professional and Ethical Standard 1 (Revised) *Code of Ethics for Assurance Practitioners* issued by the NZ Auditing and Assurance Standards Board and the International Ethics Standards Board for Accountants' Code of Ethics for Professional Accountants (IESBA Code), and we have fulfilled our other ethical responsibilities in accordance with these requirements. Other than in our capacity as auditor we have no relationship with, or interests in, the BELLYFUL NEW ZEALAND TRUST.

Restriction on responsibility

This report is made solely to the management board, as the governance, in accordance with section 42F of the Charities Act 2005, and the constitution of the entity. Our audit work has been undertaken so that we might state to the governance those matters we are required to state to them in an auditor's report and for no other purpose. To the fullest extent permitted by law, we do not accept or assume responsibility to anyone other than the governance as a body, for our audit work, for this report, or for the opinions we have formed.

Governance Responsibility for the Performance Report

The governance is responsible for:

- a) identifying outcomes and outputs, and quantifying the outputs to the extent practicable, that are relevant, reliable, comparable and understandable, to report in the statement of service performance;
- b) the preparation and fair presentation of the performance report which comprises:
 - the entity information;
 - the statement of service performance; and
 - the statement of financial performance, statement of financial position, statement of

AUDITOR'S REPORT

Page 2/2



P O Box 217-125, Botany Junction Auckland 2164
peter@charityaudit.nz www.charityaudit.nz
(09) 232-2668 (027) 568-2538



- cash flows, statement of accounting policies and notes to the performance report in accordance with PBE-SFR-A-NFP issued in NZ by the NZ Accounting Standards Board, and
- (c) for such internal control as the governance determines is necessary to enable the preparation of a performance report that is free from material misstatement, whether due to fraud or error.

In preparing the performance report, the governance is responsible for assessing the entity's ability to continue as a going concern, disclosing, as applicable, matters related to going concern and using the going concern basis of accounting unless the governance either intends to liquidate the entity or to cease operations, or have no realistic alternative but to do so.

Auditor's Responsibilities for the Audit of the Performance Report

Our objectives are to obtain reasonable assurance about whether the performance report is free from material misstatement, whether due to fraud or error, and to issue an auditor's report that includes our opinion. Reasonable assurance is a high level of assurance, but is not a guarantee that an audit conducted in accordance with ISAs (NZ) and ISAE (NZ) 3000 (Revised) will always detect a material misstatement when it exists. Misstatements can arise from fraud or error and are considered material if, individually or in the aggregate, they could reasonably be expected to influence the economic decisions of users taken on the basis of this performance report.

We are also required to apply the explanatory guides (EG) Au 1 & EG Au 9.

As part of an audit in accordance with ISAs (NZ) and ISAE (NZ) 3000 (Revised), we exercise professional judgement and maintain professional skepticism throughout the audit. We also:

- Identify and assess the risks of material misstatement of the performance report, whether due to fraud or error, design and perform audit procedures responsive to those risks, and obtain audit evidence that is sufficient and appropriate to provide a basis for our opinion. The risk of not detecting a material misstatement resulting from fraud is higher than for one resulting from error, as fraud may involve collusion, forgery, intentional omissions, misrepresentations, or the override of internal control.
- Obtain an understanding of internal control

relevant to the audit in order to design audit procedures that are appropriate in the circumstances, but not for the purpose of expressing an opinion on the effectiveness of the entity's internal control.

- Evaluate the appropriateness of accounting policies used and the reasonableness of accounting estimates and related disclosures made by management.
- Conclude on the appropriateness of the use of the going concern basis of accounting by the governance and, based on the audit evidence obtained, whether a material uncertainty exists related to events or conditions that may cast significant doubt on the entity's ability to continue as a going concern. If we conclude that a material uncertainty exists, we are required to draw attention in our auditor's report to the related disclosures in the performance report or, if such disclosures are inadequate, to modify our opinion. Our conclusions are based on the audit evidence obtained up to the date of our auditor's report. However, future events or conditions may cause the entity to cease to continue as a going concern.
- Evaluate the overall presentation, structure and content of the performance report, including the disclosures, and whether the performance report represents the underlying transactions and events in a manner that achieves fair presentation.
- Perform procedures to obtain evidence about and evaluate whether the reported outcomes and outputs, and quantification of the outputs to the extent practicable, are relevant, reliable, comparable and understandable.

We communicate with the governance regarding, among other matters, the planned scope and timing of the audit and significant audit findings, including any significant deficiencies in internal control that we identify during our audit.

Charity Integrity Audit Ltd

Director: Peter Conaglen

Chartered Accountants- South Auckland

20th September 2021

